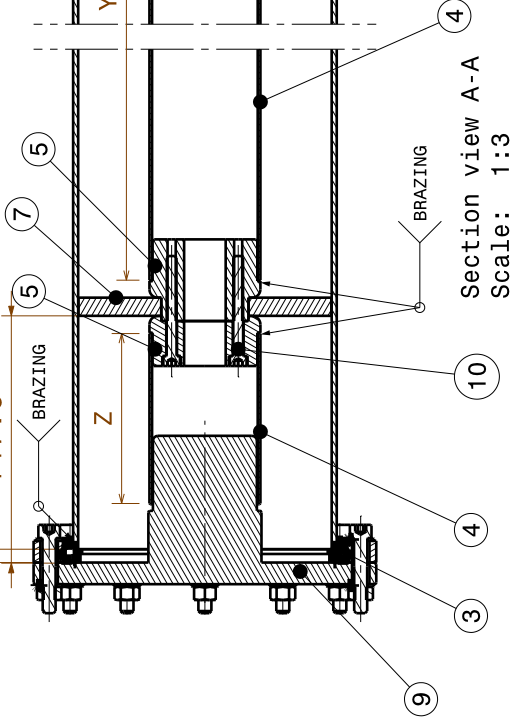
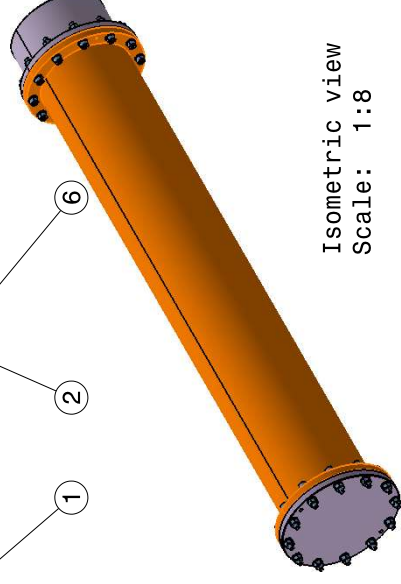




Front view
Scale: 1:3



Section view A-A
Scale: 1:3





Isometric view
Scale: 1:8

NOTE:

1. ** MARKED CONSIDER AS AN IMPORTANT DIMENSIONS
2. ALL DIMENSIONS ARE IN MM
3. ALL SHARP EDGES TO BE REMOVED AND REPLACED BY CHAMFER OF 1x45 DEG
4. FLATNESS VALUES ARE NOT TO EXCEED 3 MM/METER ON ANY UNSPECIFIED SURFACE
5. ROUGHNESS OF ALL UNSPECIFIED SURFACES DO NOT EXCEED Ra 8 μ m
6. ALL UNSPECIFIED TOLERANCE TO BE CONSIDERED AS PER ISO 2768-1

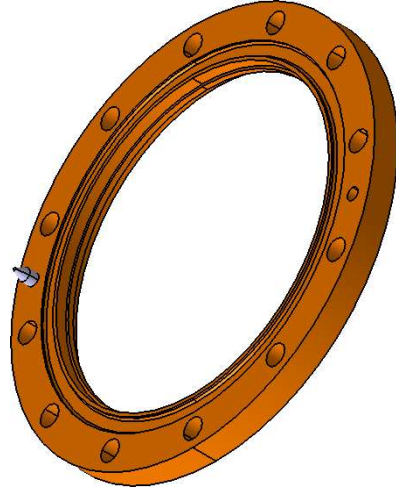
500MM		484MM	326MM	103MM
650MM		634MM	476MM	103MM
1000MM		984MM	796MM	103MM
TX-LINE LENGTH (L)	OUTER CONDUCTOR LENGTH (X)	INNER CONDUCTOR-1 LENGTH (Y)	INNER CONDUCTOR-2 LENGTH (Z)	

11	M10X45 ALLEN BOLT WITH PLAIN,SPRING WASHER & NUT	SS304		HARDWARE	24
10	M6X70 ALLEN BOLT	SS304		HARDWARE	04
9	FLANGE COVER 1&2	PVC		PARTS	1+1
8	IC JOINT ASSEMBLY	CuZn40 & PTFE		ASSY	1
7	INNER CONDUCTOR SUPPORT DISK	PTFE		PART	1
6	O-RING	RUBBER SILICON		PART	1
5	BULLET 1&2	CuZn40		PARTS	1+1
4	INNER CONDUCTOR PART-1/PART-2	ETP COPPER		PARTS	1+1
3	SWIVEL FLANGE PART 1&2	CuZn40		ASSY	1+1
2	FIX FLANGE	CuZn40		PART	1
1	OUTER CONDUCTOR	ETP COPPER		PART	1
PART NO.	PART NAME	MATERIAL		TYPE	QTY

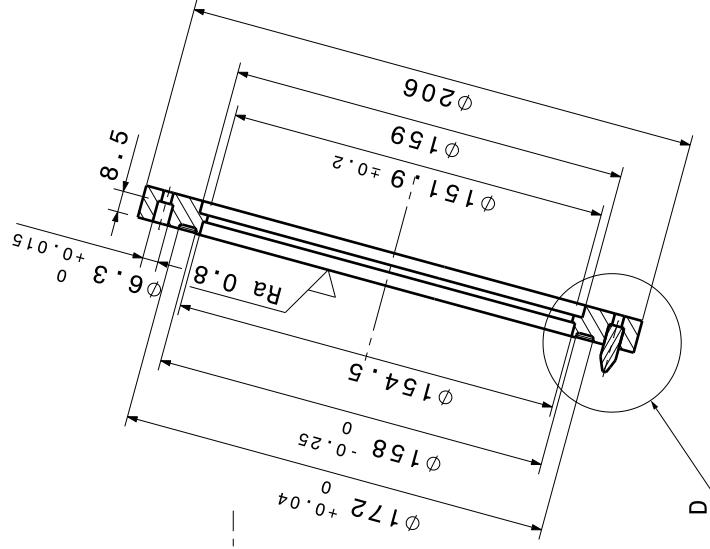
INDUS ID: A84THCP		RELEASED BY		ITER INDIA (IPR) GANDHINAGAR		 ITER-India	
		APPROVED BY		CONFIDENTIAL UNLESS AUTHORISED			
		AKHIL JHA		The information on this drawing is confidential under the terms of the ITER India agreement. This information shall not be transmitted to anyone who is not authorised to receive it.			
		CHECKED BY		DRAWING TITLE			
		ROHIT ANAND		6 - 1/8" TX_LINE_ASSEMBLY			
		CONTROLLED BY		DRAWING NUMBER		SHEET / REVISION	
				PBS 3 LEVELS		01 / V1_2	
REV DATE 03/02/2026		QUALITY CLASS: 02		DRAWN BY PARESH VASAVA		II/ICH&CD/6- 1/8"TX LINE/00	
SHEET SIZE A3		SCALE		SAFETY CLASS: NONSC			
THIRD ANGLE PROJECTION				NO OF SHEETS 13			



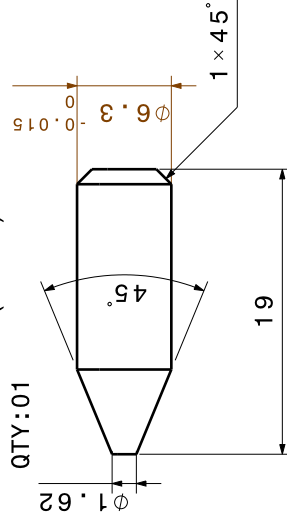
Ø10.5 x 12N0S, CLEAR HOLES



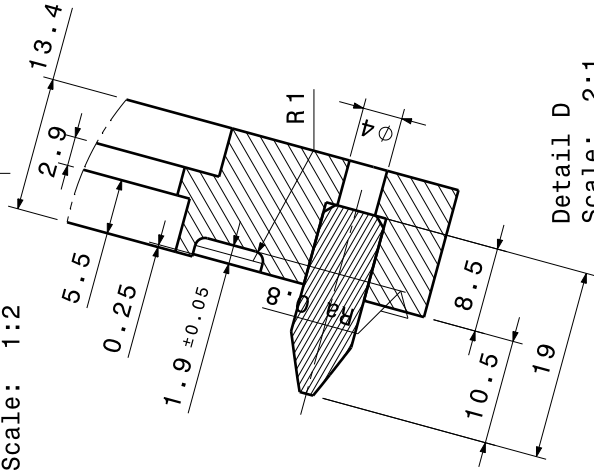
Isometric view
Scale: 1:2



Section view C-C
Scale: 1:2



Front view
Scale: 3:1

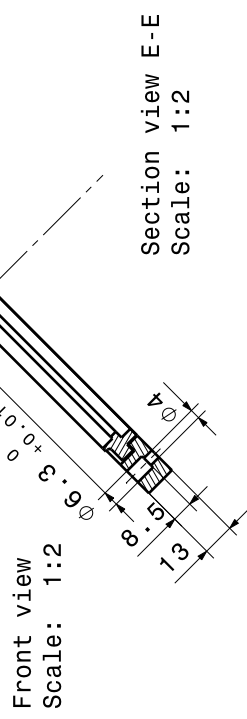
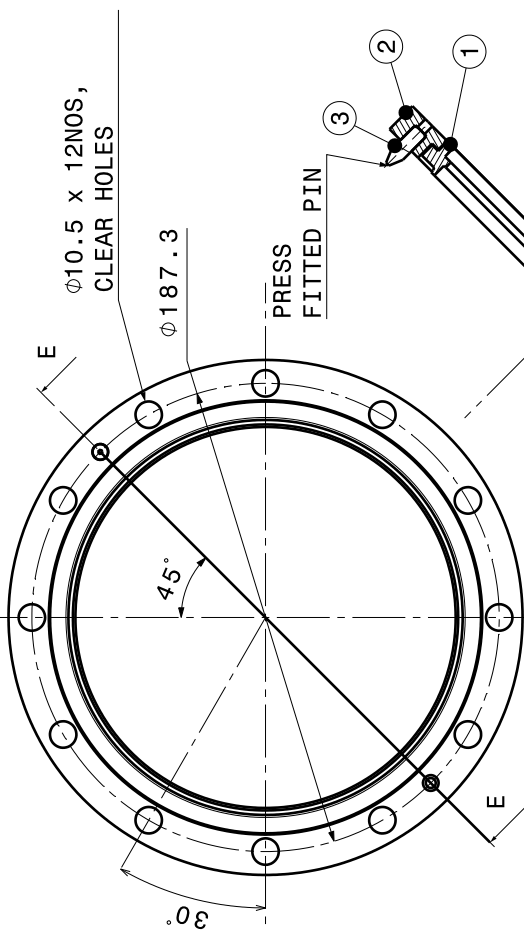


Detail D
Scale: 2:1

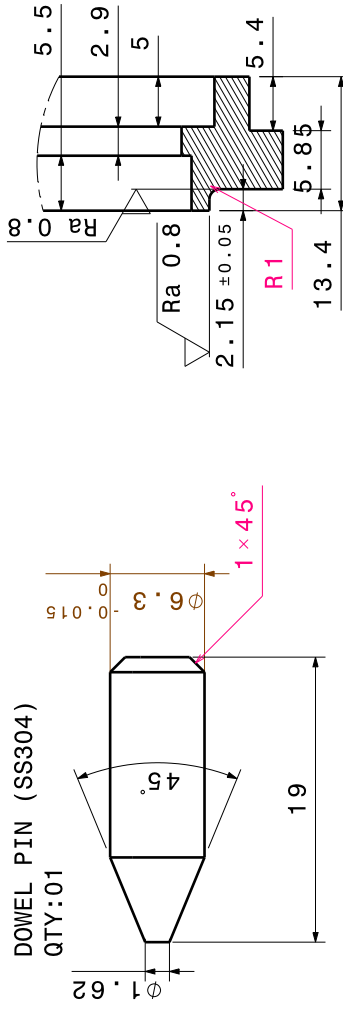
- NOTE: 1. MATERIAL SHOULD BE FREE FROM POROSITY
2. ALL SHARP EDGES TO BE REMOVE
3. FLANGES SHOULD BE MADE FROM SOILD ROD OF CuZn40

MATERIAL: IS/ISO CuZn40
QTY:01

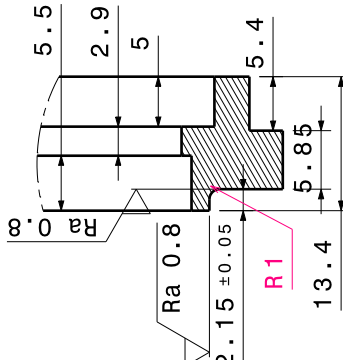
INDUS ID: A84THCP		RELEASED BY		ITER INDIA (IPR) GANDHINAGAR	
		APPROVED BY AKHIL JHA		CONFIDENTIAL UNLESS AUTHORISED	
		CHECKED BY ROHIT ANAND		<p>The information on this drawing is confidential under the terms of the ITER India agreement. This information is not to be disclosed to anyone who is not authorised to receive it.</p>	
		CONTROLLED BY		DRAWING TITLE	
REV DATE 03/02/2026	QUALITY CLASS: 02	DRAWN BY PARESH VASANA		6 - 1/8" 1MTR_TX_LINE_ASSEMBLY	
SHEET SIZE A3	SAFETY CLASS: NONSC	PBS 3 LEVELS		DRAWING NUMBER	
THIRD ANGLE PROJECTION	NO OF SHTS 13			SHEET 03	
				REVISION V1_2	



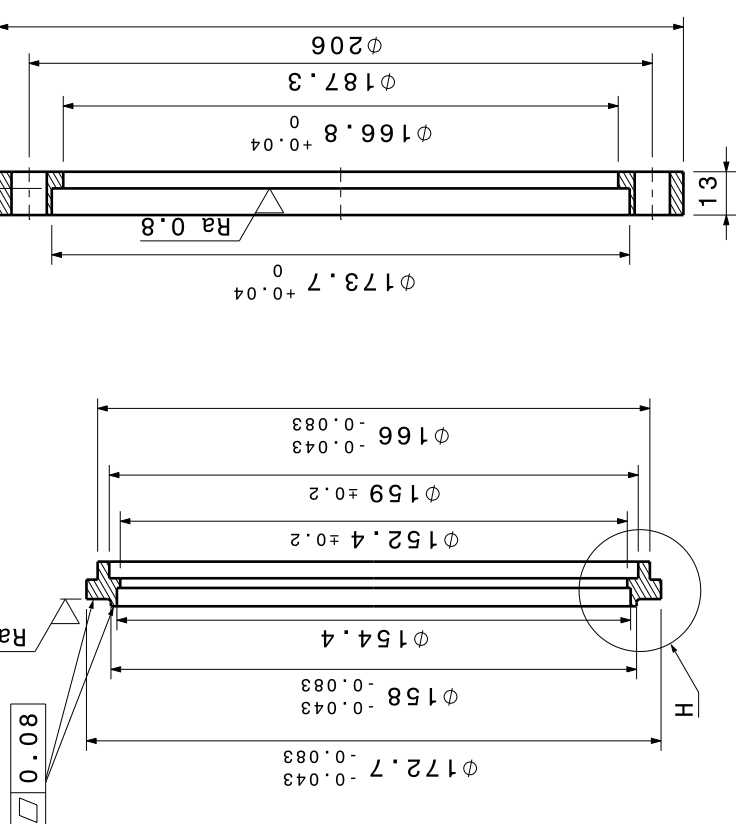
Section view E-E
Scale: 1:2



Front view
Scale: 3:1




Detail H
Scale: 2:1

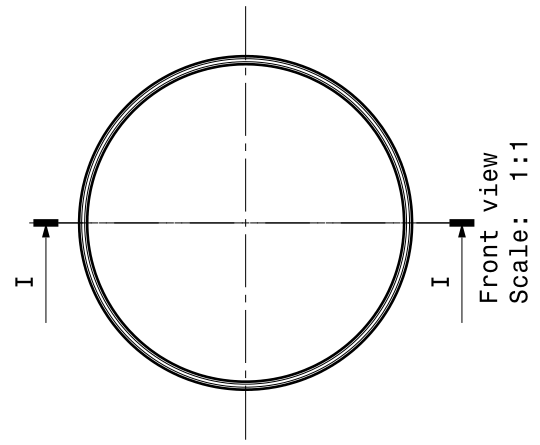


SWIVEL FLANGE PART-1
MATERIAL: CuZn40
QTY:01

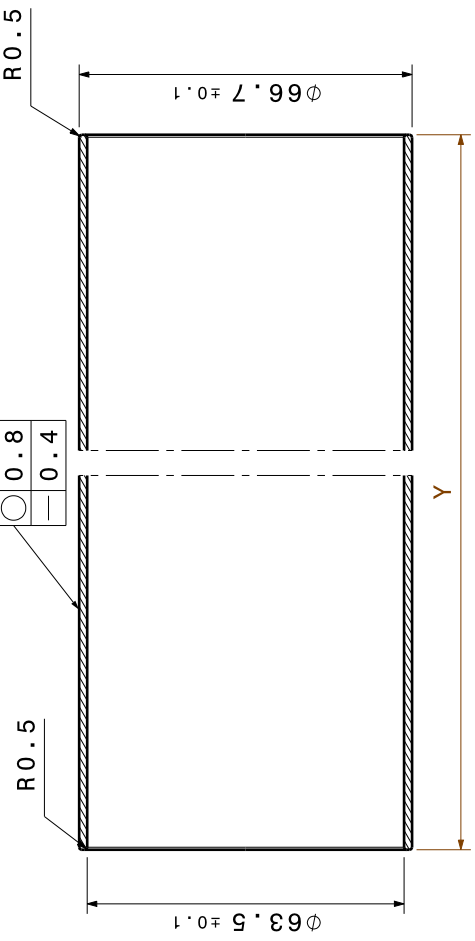
SWIVEL FLANGE PART-2
MATERIAL: CuZn40
QTY:01

INDUS ID: A84THCP		RELEASED BY		ITER INDIA (IPR) GANDHINAGAR			
		APPROVED BY		CONFIDENTIAL UNLESS AUTHORISED			
				The information on this drawing is confidential under the terms of the ITER India agreement. This information shall not be transmitted to anyone who is not authorised to receive it.			
		CHECKED BY		DO NOT AUTHORISED TO RECEIVE IT.			
		ROHIT ANAND		DRAWING TITLE			
		CONTROLLED BY		SWIVEL FLANGE PART 1&2			
REV DATE		QUALITY		6-1/8" 1MTR_TX_LINE_ASSEMBLY			
03/02/2026		CLD:					
SHEET SIZE		SHEET CLASS:					
A3		NONISC					
THIRD ANGLE		NOT OF		SHEET REVISION			
PROJECTION		SHTS		DRAWING NUMBER		04 V1_2	
		13		II/ICH&CD/6-1/8-TX LINE/3			

PART: INNER CONDUCTOR PART-1 QTY:01

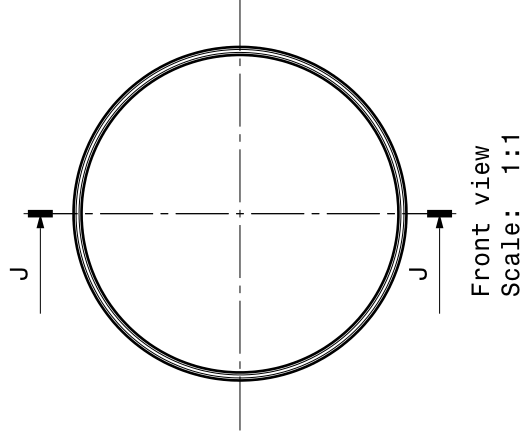


○	0.8
—	0.4

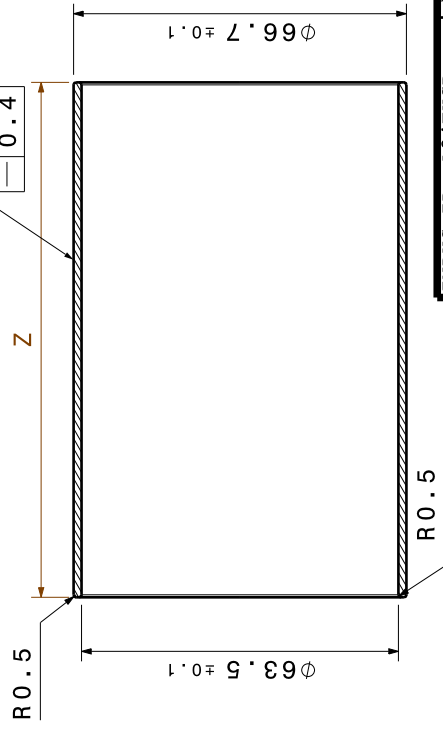


Section view I-I
Scale: 1:1

PART: INNER CONDUCTOR PART-2 QTY:01



○	0.8
—	0.4



Section view J-J
Scale: 1:1

MATERIAL :- ETP COPPER, PURITY 99.9
MINIMUM TUBE SHOULD BE SEAMLESS
QTY: 01

NOTE:- SURFACE IRREGULARITIES, SCRATCHES,
DENTS AND TOOL MARKS ARE NOT ALLOWED
ON THE OUTER SURFACE OF INNER CONDUCTOR



RELEASED BY
ITER INDIA (IPR) GANDHINAGAR

APPROVED BY
AKHIL JHA

CHECKED BY
ROHIT ANAND

CONTROLLED BY

CONFIDENTIAL UNLESS AUTHORISED
The information on this drawing is confidential
under the terms of the ITER India agreement. This
information shall not be transmitted to anyone who
is not authorized to receive it.

INDUS ID: A84THCP

REV DATE
03/02/2026

SHEET SIZE
A1

SCALE

QUALITY CLASS:
CLASS: 2

NO. OF SHOTS
13

DRAWING TITLE
INNER CONDUCTOR PART-1 & PART-2

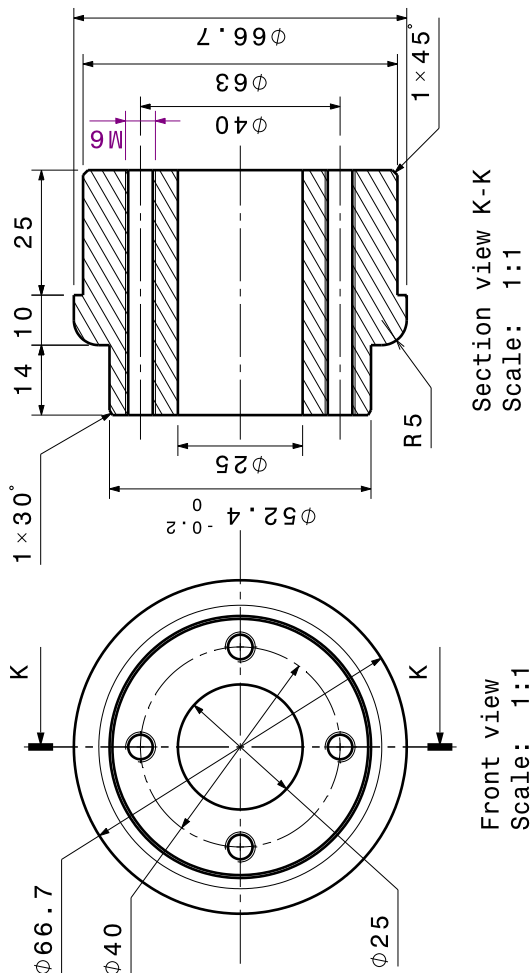
6-1/8" 1MTR_TX_LINE_ASSEMBLY

PBS 3 LEVELS

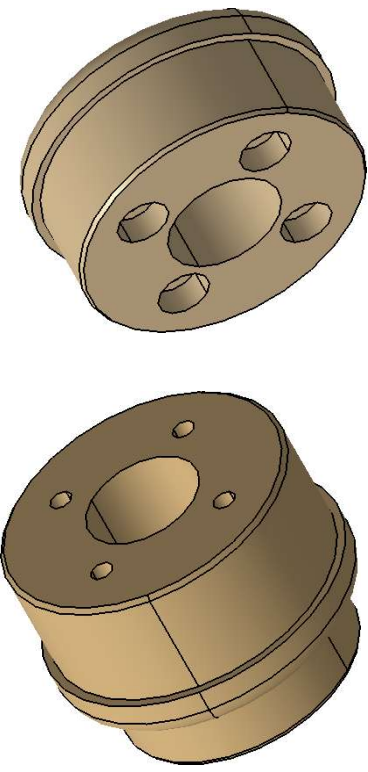
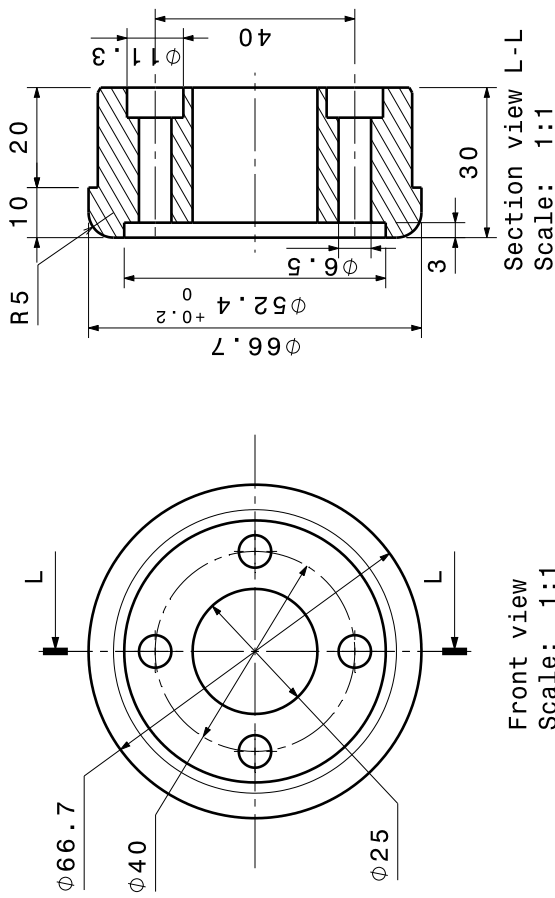
DRAWING NUMBER
II/ICH&CD/6-
1/8-TX LINE/4

SHEET REVISION
05 V1_2

PART: BULLET-1 MATERIAL: CuZn40 QTY:01




PART: BULLET-2 MATERIAL: CuZn40 QTY:01



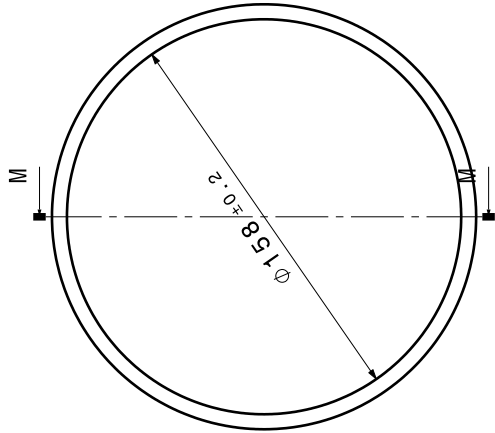
Isometric view Scale: 1:1

Isometric view Scale: 1:1

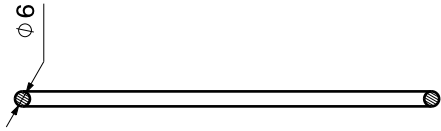
- NOTE:
- 1.REMOVE ALL DIRT, GREASE, AND OIL FROM THE COMPONENT.
 - 2.MASK ALL THREADS, MATING SURFACES, AND ANY AREAS THAT MUST NOT BE SILVERED.
 - 3.REMOVE OXIDATION OR SCALE FROM BRAZED AREAS.
 - 4.FOLLOW THE SILVERING PROCESS (Cu: 5μ + Ag: 20μ).

INDUS ID: A84THCP		RELEASED BY ITER INDIA (IPR) GANDHINAGAR	
		CONFIDENTIAL UNLESS AUTHORISED The information on this drawing is confidential under the terms of the ITER India agreement. This information shall not be transmitted to anyone who is not authorised to receive it.	
		 ITER-India	
		DRAWING TITLE BULLET - 1&2	
		6 - 1/8" 1MTR_TX_LINE_ASSEMBLY	
		SHEET REVISION 06 V1_2	
		DRAWING NUMBER II/ICH&CD/6-1/8-TX LINE/5	
		PBS 3 LEVELS	
		APPROVED BY AKHIL JHA	
		CHECKED BY ROHIT ANAND	
		CONTROLLED BY	
		DRAWN BY PARESH VASAVA	
REV DATE 03/02/2026		QUALITY CLASS: 02	
SHEET SIZE A3		SAFETY CLASS: NON-SIC	
THIRD ANGLE PROJECTION		NO. OF SHOTS 13	

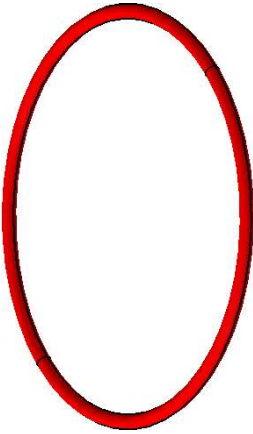
PART:O-RING MATERIAL: RUBBER SILICON QTY:01



Front view
Scale: 1:2



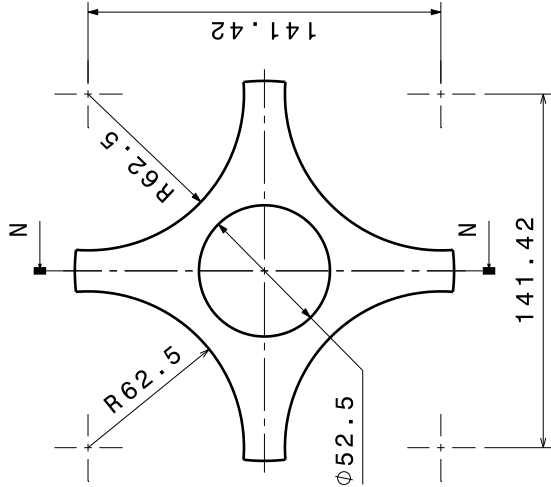
Section view M-M
Scale: 1:2



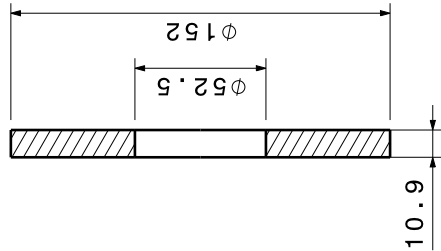
Isometric view
Scale: 1:2

AS PER ISO 3601-1 METRIC STANDARD O-RING CROSS-SECTION: 5.33MM
AND INSIDE DIAMETER: 158.12MM

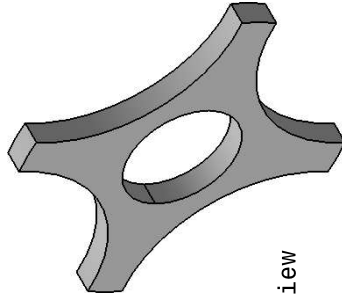
PART: INNER CONDUCTOR SUPPORT DISK MATERIAL: PTFE QTY:01



Front view
Scale: 1:2

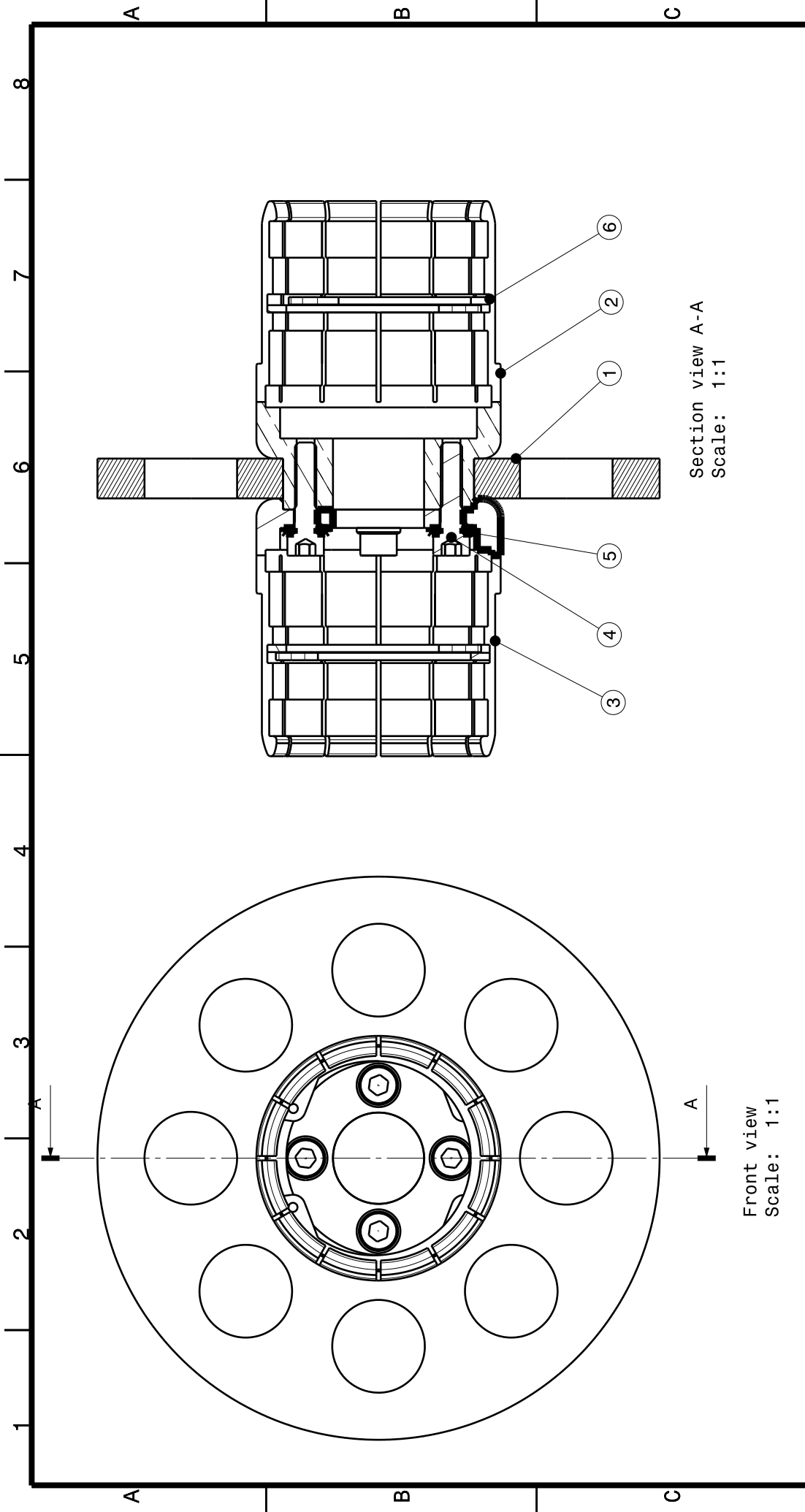


Section view N-N
Scale: 1:2



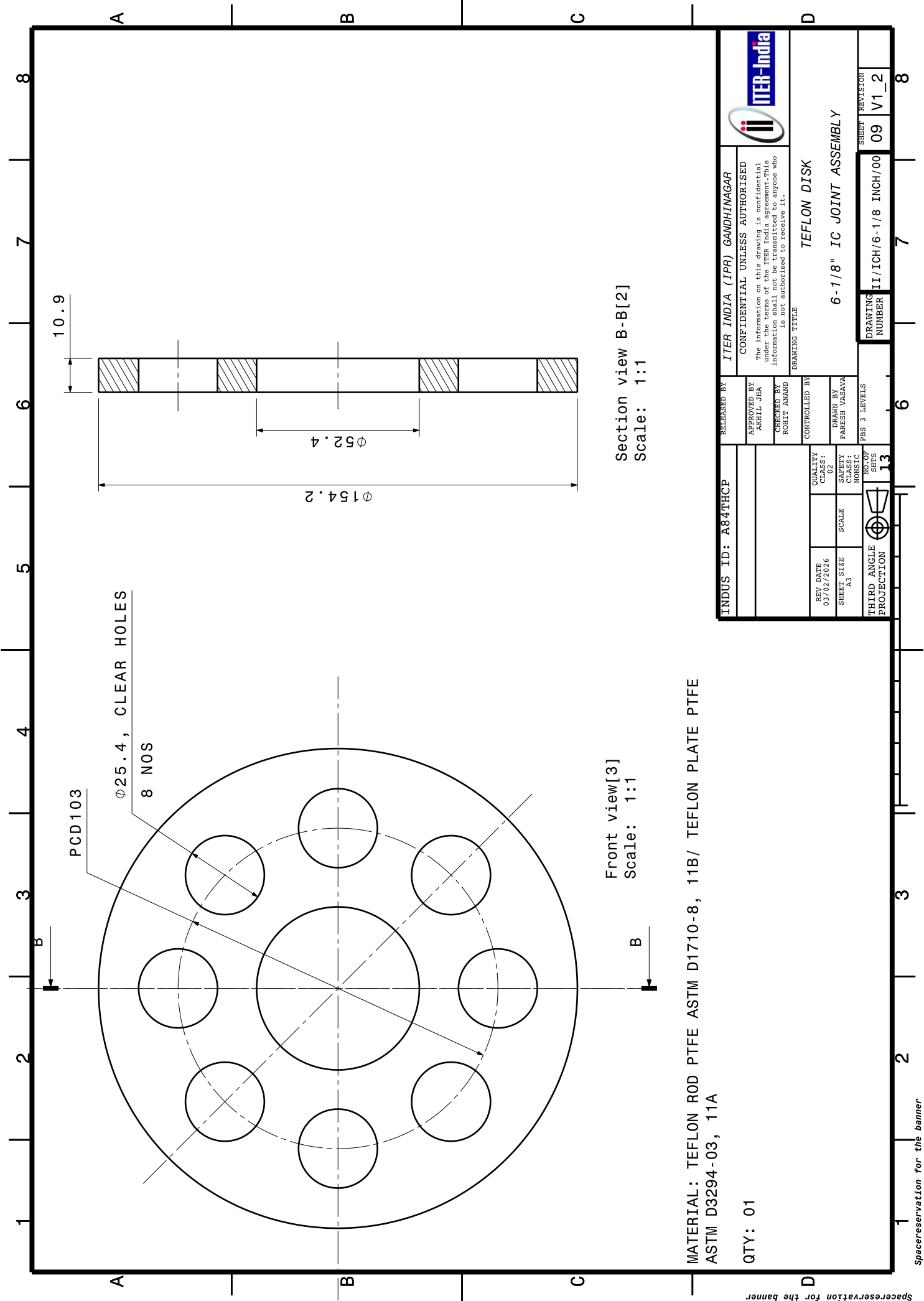
Isometric view
Scale: 1:2

INDUS ID: A84THCP		RELEASED BY ITER INDIA (IPR) GANDHINAGAR	
		CONFIDENTIAL UNLESS AUTHORISED The information on this drawing is confidential under the terms of the ITER India agreement. This information shall not be transmitted to anyone who is not authorised to receive it.	
		DRAWING TITLE O-RING & INNER CONDUCTOR SUPPORT DISK	
		6-1/8" 1MTR_TX_LINE_ASSEMBLY	
		ITER-India	
		APPROVED BY AHIL JHA	
		CHECKED BY ROHIT ANAND	
		CONTROLLED BY	
		DRAWN BY PARESH VASAVA	
		PBS 3 LEVELS	
		NO. OF SHTS 13	
		THIRD ANGLE PROJECTION	
		DRAWING NUMBER II/ICH&CD/6- 1/8-TX LINE/6&7	
		SHEET 07	
		REVISION V1_2	



6	CIRCLIP	SS304	4
5	SPRING WASHER FOR M6	SS304	4
4	ALLEN CAP SCREW M6x25L	SS 304	4
3	IC JOINT FEMALE	IS/ISO CuZn40	1
2	IC JOINT MALE	IS/ISO CuZn40	1
1	TEFLON DISK	TEFLON	1
PART NO	PART NAME	DESCRIPTION / MATERIAL	QTY

INDUS ID: A84THCP		RELEASED BY ITER INDIA (IPR) GANDHINAGAR		ITER-India	
		APPROVED BY AKHIL JHA		CONFIDENTIAL UNLESS AUTHORISED	
		CHECKED BY ROHIT ANAND		The information on this drawing is confidential under the terms of the ITER India agreement. This information shall not be transmitted to anyone who is not authorised to receive it.	
		CONTROLLED BY		DRAWING TITLE	
REV DATE 03/02/2026		QUALITY CLASS: A1		6-1/8" IC JOINT ASSEMBLY	
SHEET SIZE A1		SCALE		SHEET REVISION	
THIRD ANGLE PROJECTION		NO OF SHTS 13		08 V1_2	
		PBS 3 LEVELS		DRAWING NUMBER II/ICH/6-1/8 INCH/00	



INDUS ID: A84THCP		RELEASED BY ITER INDIA (IPR) GANDHINAGAR		ITER-India	
APPROVED BY AKHIL JHA		CONFIDENTIAL UNLESS AUTHORISED The information on this drawing is confidential under the terms of the ITER India agreement. This information shall not be transmitted to anyone who is not authorised to receive it.			
CHECKED BY ROHIT ANAND		DRAWING TITLE TEFLON DISK			
CONTROLLED BY		6-1/8" IC JOINT ASSEMBLY			
REV DATE 03/02/2026		DRAWN BY PARESH VASAVA			
SHEET SIZE A1		PBS 3 LEVELS			
SCALE		DRAWING NUMBER II/ICH/6-1/8 INCH/00			
THIRD ANGLE PROJECTION		SHEET REVISION 09 V1_2			
NO OF SHTS 13		8			

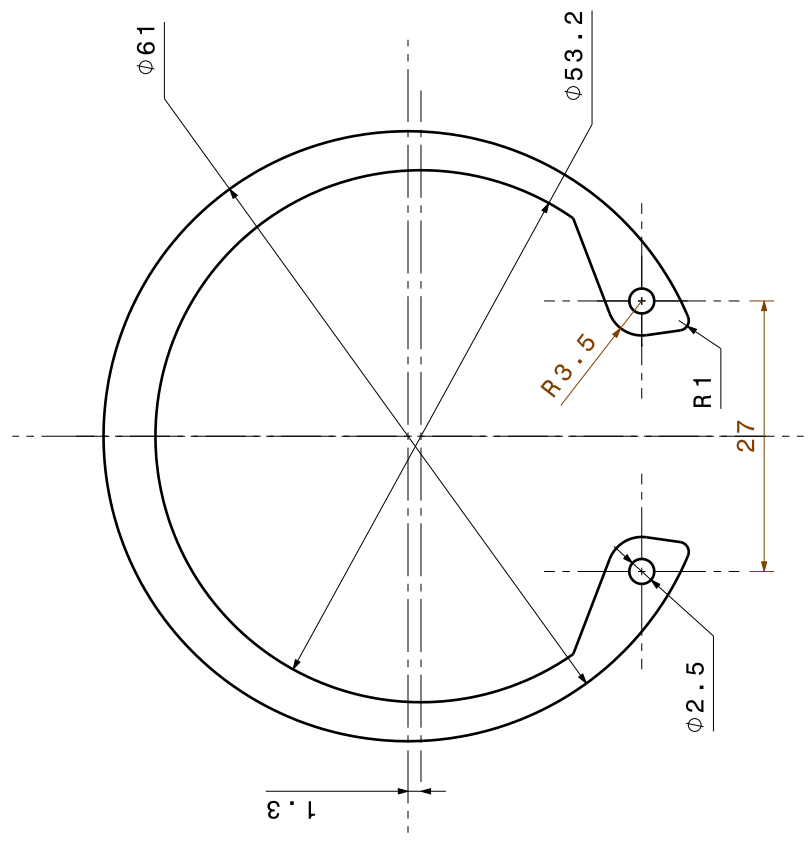
1 2 3 4 5 6 7 8

A A

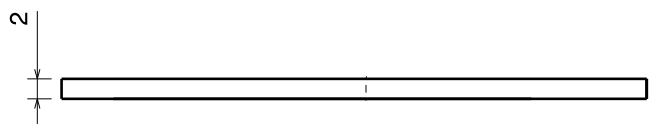
B B

C C

D D



Front view
Scale: 2:1



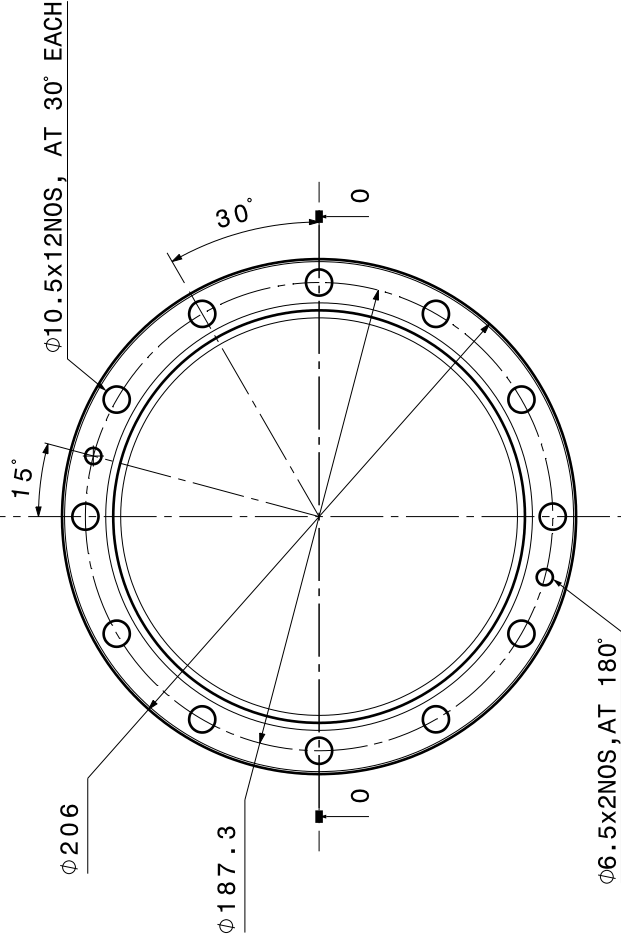
Left view
Scale: 2:1

PART: CIRCLIP STANDARD ITEM
MATERIAL: SS
QTY: 04NOS,

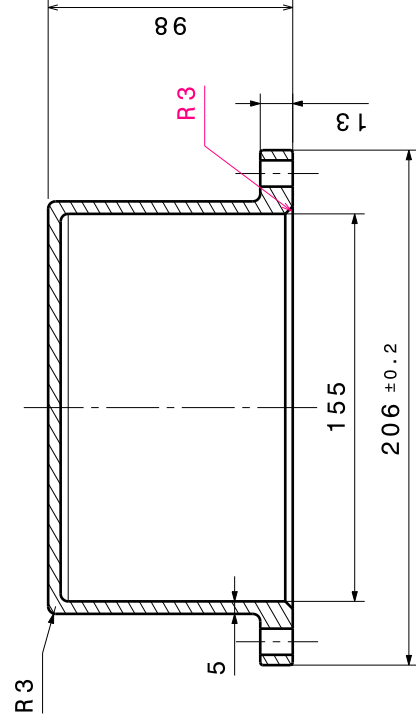
INDUS ID: A84THCP		RELEASED BY ITER INDIA (IPR) GANDHINAGAR		ITER-India	
		APPROVED BY AKHIL JHA		CONFIDENTIAL UNLESS AUTHORISED The information on this drawing is confidential under the terms of the ITER India agreement. This information shall not be transmitted to anyone who is not authorised to receive it.	
		CHECKED BY ROHIT ANAND		DRAWING TITLE CIRCLIP	
REV DATE 03/02/2026		QUALITY CLASS: Q2		6-1/8" IC JOINT ASSEMBLY	
SHEET SIZE A1		SCALE		SHEET REVISION 12 V1_2	
THIRD ANGLE PROJECTION		NO OF SHTS 13		DRAWING NUMBER II/ICH/6-1/8 INCH/00	

1 2 3 6 7 8

PART: FLANGE COVER-1 MATERIAL: PVC QTY:01

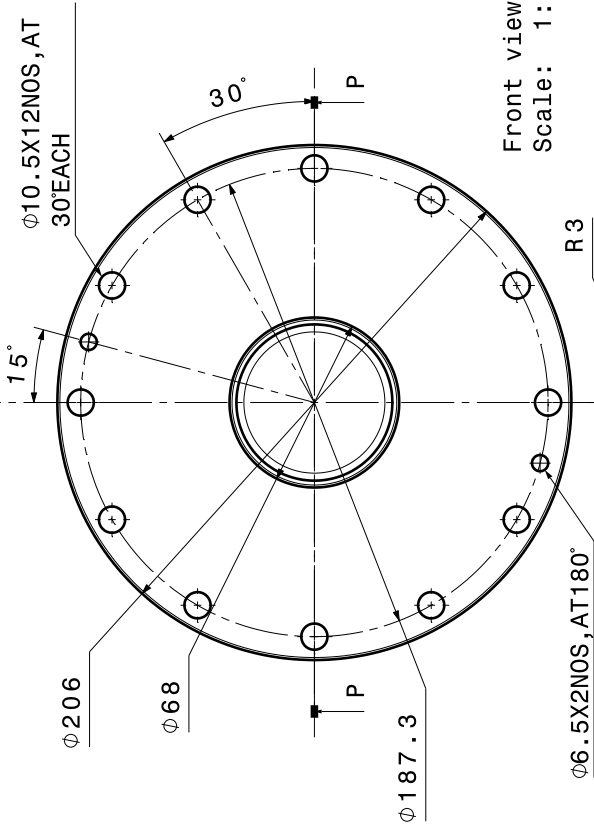


Front view
Scale: 1:2

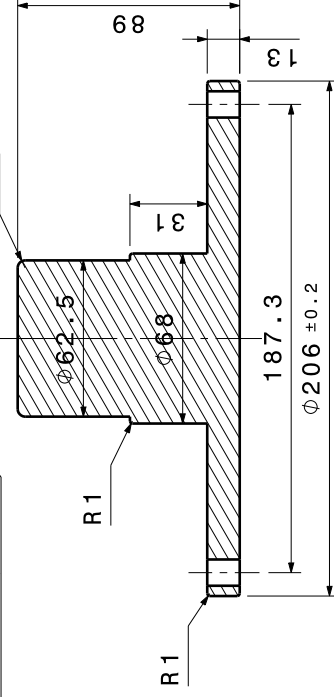


Section view 0-0
Scale: 1:2

PART: FLANGE COVER-2 MATERIAL: PVC QTY:01



Front view
Scale: 1:2



Section view P-P
Scale: 1:2

INDUS ID: A84THCP		RELEASED BY ITER INDIA (IPR) GANDHINAGAR		ITER-India	
		APPROVED BY AKHIL JHA		CONFIDENTIAL UNLESS AUTHORISED	
		CHECKED BY ROHIT ANAND		The information on this drawing is confidential under the terms of the ITER India agreement. This information shall not be transmitted to anyone who is not authorised to receive it.	
		CONTROLLED BY		DRAWING TITLE	
		DRAWN BY PARESH VASAVA		FLANGE COVER 1&2	
		PBS 3 LEVELS		6 - 1/8" 1MTR_TX_LINE_ASSEMBLY	
REV DATE 03/02/2026		QUALITY CLASS: CLASS 1		SHEET REVISION	
SHEET SIZE A1		SCALE		DRAWING NUMBER	
THIRD ANGLE PROJECTION		NO. OF SHTS 13		II/ICH&CD/6-1/8"TX LINE/9	
				V1_2	